



view from entrance area



from above to below, from left to right: view from garden towards living area, garden, view from the street at night

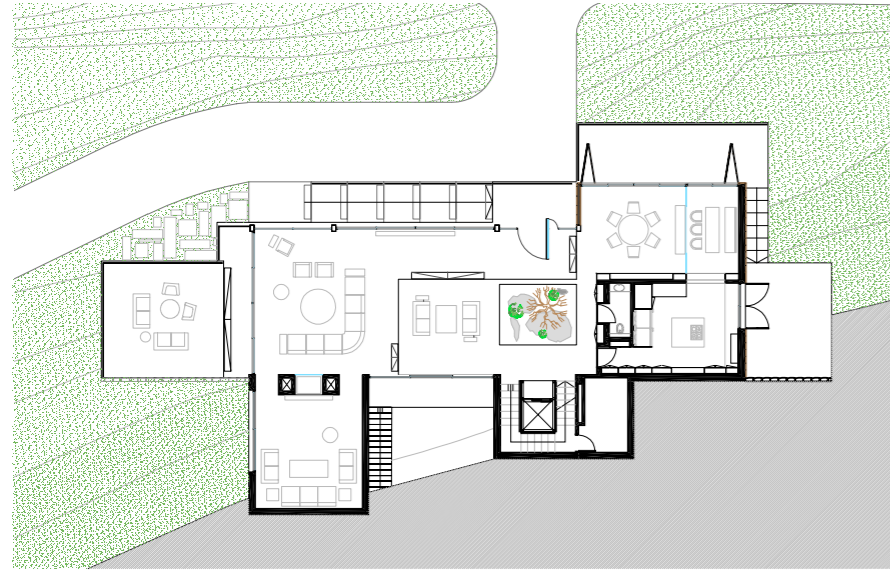
Tahan Villa

Kfour, Lebanon

Architect: BLANKPAGE Architects
Year of completion: 2013
Gross floor area: 865 m²
Materials used: concrete, basalt stone, limestone, steel, glass

Perfectly framing the view towards the Mediterranean through ingenious cantilevering platforms and a suspended box above, Tahan Villa is a fabulous intervention in Mediterranean design. The elegant dwelling was conceived as an architectural adaptation of the rocks that characterize the site – clad with sliding stone panels, the massive volume echoes and pays homage to the texture

of the rocky landscape. Subverting the traditional Lebanese village house of stone walls and terracotta roofs and radically reinterpreting the surrounding elements, the villa marks a bold new departure in residential architecture. From façades to roof terrace, furniture to lighting, breathtaking imagination and skill are evident at every turn.



from above to below: ground floor plan, living area



from above to below: upper floor, living area on ground floor



living and dining area seem to float above the sea



from above to below: dining area and kitchen, exterior view

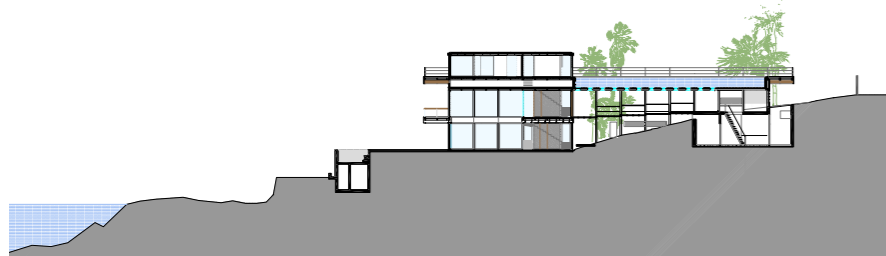
Amchit Residence

Amchit, Lebanon

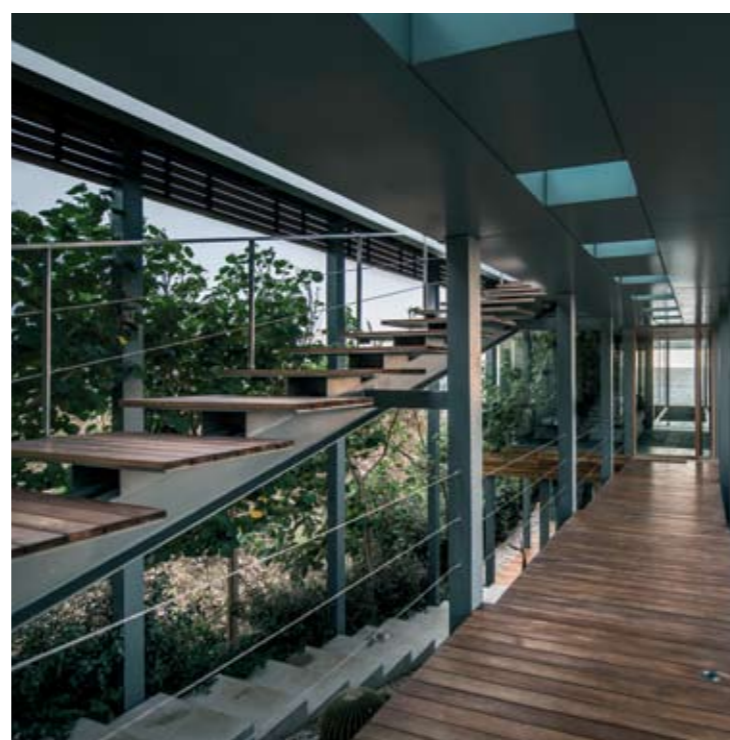
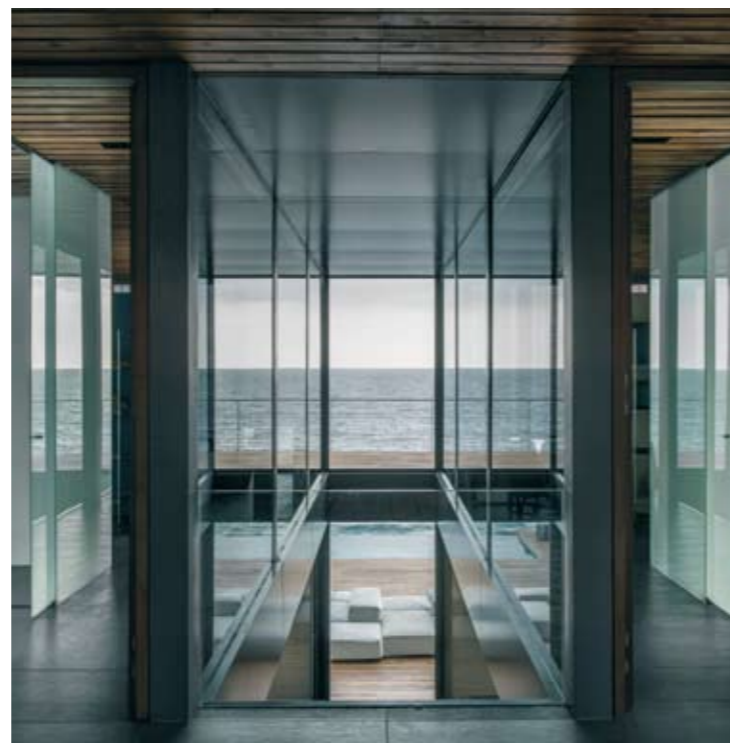
Architect: BLANKPAGE Architects
Year of completion: 2013
Gross floor area: 430 m²
Materials used: steel, glass, teak wood

Ingeniously conceived as a layering of decks, this stunning beach house seeks to maximize its relationship with the turquoise sea through a visual and compositional celebration of horizontality in general and the Mediterranean horizon in particular. The result is a magnificent feat of architecture and innovation. On the upper platform, the gorgeous master bedroom opens up onto a pool and

expansive sundeck, while the lower deck features an elegant and very inviting infinity pool. A smooth promenade formed by an imaginative system of external ramps and staircases connects the platforms, linking the various levels of the rocky landscape that stretches from the street to the sea. This truly is a triumph of Mediterranean design.



from above to below, from left to right: section, garden in entrance area, view from the bedrooms, view from parking ramp



from above to below: swimming pool on rooftop, living area